

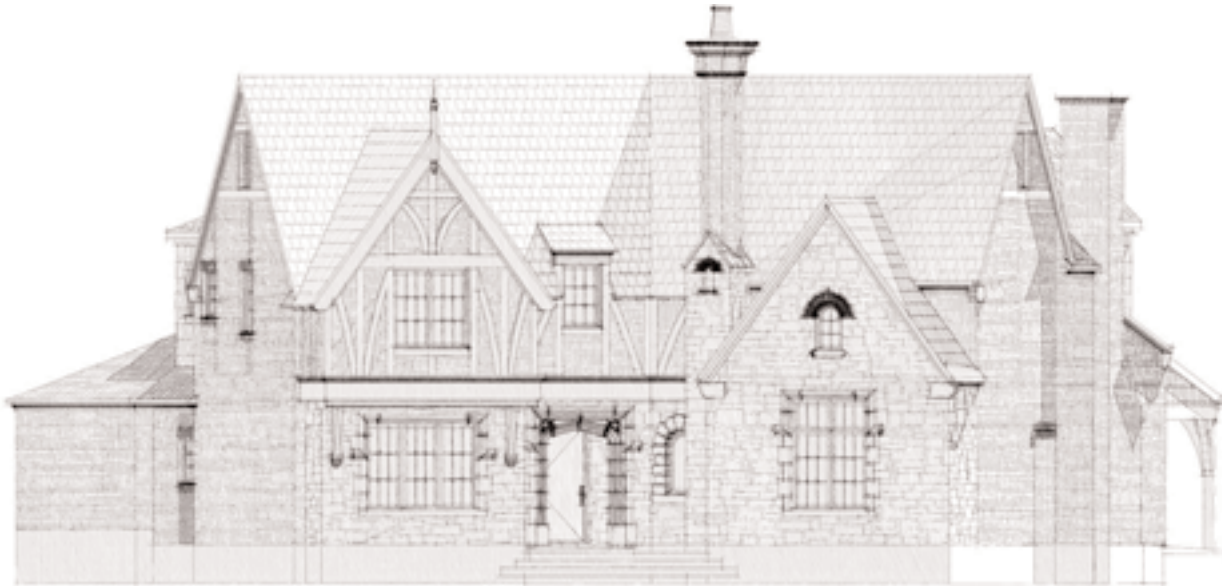
3609 VINTAGE PLACE (AVAILABLE)

4 BEDROOMS / 5.5 BATHS / FAMILY ROOM / DINING ROOM / STUDY / KITCHEN
BREAKFAST NOOK / UTILITY / BONUS-MEDIA ROOM

APPROX. 4800 SQ FT. (per appraiser est.)

Property Information:

Address: 3609 Vintage Place
Legal: Lot 11, Block 7/2984
Addition: Vintage Addition



The craze for Old English architecture exploded in the 1920s and remains hugely popular today. Studying this generous manor, it's easy to see why. A traditional take on the Tudor style, the home exudes a feeling of permanence and rugged charm. Stone, variegated brick, slate roof and rough cedar half-timbering all contribute to its rustic appeal. A castle-like wooden front door with elaborate custom hinges and carved limestone surround provides the crowning touch.

The picturesque details continue inside, including richly stained Tudor cabinetry, Gothic cast stone fireplace, and a kitchen lavish enough to prepare a royal banquet...or just feed a hungry teenager.

The first floor's well-considered layout provides a perfect space for celebrating holidays and special occasions, or just curling up by the fire with a snack. A bonus room far to the back makes a great haven for the kids and if needed, could easily serve as a bedroom suite. A generous covered loggia offers a peaceful place to relax in nice weather.

On the second floor are three welcoming bedrooms and a luxurious master suite, complete with Hollywood-style walk through closet.

If you've always appreciated classic style and want a home that will only get better with age, you must see this outstanding Tudor manor from Vintage Contemporaries.

Vintage Contemporaries I, Ltd. 3027 Monticelo Ave. Dallas, TX 75205 214-824-2579 (phone) 206-202-3023 (fax)

Square footages are provided for informational purposes and are merely estimates, therefore Vintage Contemporaries does not guarantee the accuracy of the information provided. Pricing, features, floorplans and specifications are subject to change without notice at anytime at the discretion of Vintage Contemporaries

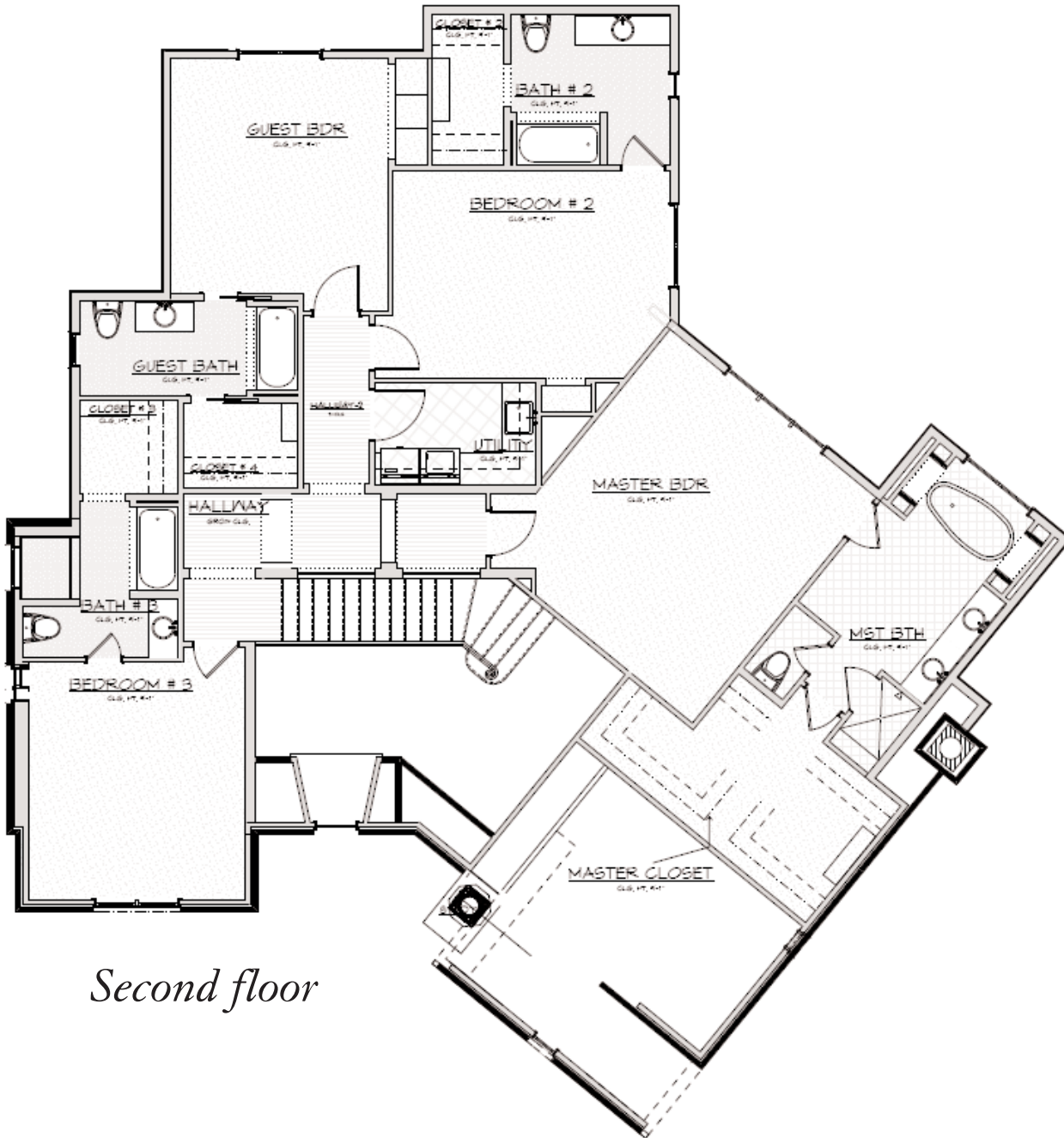
Vintage Contemporaries



3609 VINTAGE PLACE

4 BEDROOMS / 5.5 BATHS / FAMILY ROOM / DINING ROOM / STUDY / KITCHEN
BREAKFAST NOOK / UTILITY / BONUS-MEDIA ROOM

APPROX. 4800 SQ FT. (per appraiser est.)



Second floor

Vintage Contemporaries



DETAILS. DETAILS. DETAILS.

In many ways, it's easy to see what makes Vintage Contemporary homes so special: Exceptional, one-of-a-kind exteriors; authentic materials; faithful re-creation of period styles; abundant space, without sacrificing grace. Yet other benefits are less obvious. They come from hundreds of behind-the-scenes details we provide to make your home look, work, live, and feel like no other.

THE FOLLOWING ARE SOME OF THE AMENITIES IN THIS HOME:

KITCHEN & BATH

Bertazoni 48" Gas Range
Northland Stainless Steel Refrigerator
Asko Dishwasher
Kohler® & Price Pfister® Plumbing Fixtures
Granite, Marble, Wood & Tile countertops
Custom, furniture-style cabinetry
Custom stain/glaze colors for cabinets

ELECTRICAL & PLUMBING

Computer network wiring through-out
Security system pre-wiring
Automatically controlled exterior lighting

LIGHTING

Antique & Reproduction lighting
Insulated recessed lighting throughout
Accent lighting throughout

HIGH-QUALITY EXTERIOR MATERIALS

Clay chimney cap
Jeldwin-Pozzi® wood windows
Multi-colored Modular Brick
Stone & Cast stone on exterior facade
Multi-colored Slate Roof
Hand-crafted 1/4-Sawn Oak Front Door

ENERGY-STAR HOMES

Cocoon® insulation
Energy Star construction **
Radiant-barrier "cool ply" roof decking
Wood Windows with Low-E & Insulated Glass
** 30-50% utility bill savings over "typical" construction **



BEAUTIFUL, DURABLE INTERIORS

Slate Entry Tile
Walker Zanger® Tile Bathroom
Handscraped Hardwood floors
Primed undercoat sheetrock hand troweled texture
All-wood stair Stair Treads
Custom Crafted entry door
Handmade Custom Staircase & Newel Posts
Isokern® Wood Burning Fireplace (2)
Stone Hearth & Hewn Beam Mantle
Custom Mirrors
Carpet Allowance for Buyer Selection

LANDSCAPE DESIGN

Zoned Sprinkler system
Cedar fencing
Multiple trees in front & backyard
Professional Designed landscaping

AND ON ALL HOMES

Engineered and inspected post-tension foundations with piers to bedrock

Few, if any, builders offer such a comprehensive, well-coordinated package of amenities. You'll be rewarded with a home that requires only personal furnishings to make it complete. By contrast, outfitting an ordinary spec-type house to this level of quality would easily add tens of thousands to its cost...rapidly eroding what might seem to be a "good deal."

It's still true: You get what you pay for. And at Vintage Contemporaries, that means timeless designs, unparalleled quality, and details...details...details.

To find out more about this home or schedule a showing, call 214-824-2579.

Additional information, photos, floorplans and virtual tours are available on our website at:

WWW.VINTAGECONTEMPORARIES.COM