

# 3605 VINTAGE PLACE \*\*\*SOLD\*\*\*

4 BEDROOMS / 4.5 BATHS / FAMILY ROOM / DINING ROOM / STUDY / KITCHEN  
BREAKFAST NOOK / UTILITY / BONUS-MEDIA ROOM / PLAY LOFT

APPROX. 4569 SQ FT. (5499 SF WITH PORCHES & GARAGE)

## Property Information:

Address: 3605 Vintage Place  
Legal: Lot 10, Block 7/2984  
Addition: Vintage Addition  
Lot Size: 9449 Square Feet



This Spanish-style villa captures the exuberance of the Jazz Age to create an upbeat home you'll enjoy for many years. Infused with a lively and unique color palette, it's captivating from the moment you drive up. A multi-color tile roof decorates a cool stucco body, enhanced by cheerful trim colors that make the architectural details pop. Custom handmade tiles -each one a work of art in itself- adorn the door surround and are used generously throughout the home. Especially stunning is the configuration of tiles in the master and guest baths, featuring classic Art Deco color combinations.

This gracious home is ideal for those who've always wished they could entertain more or host overnight guests, but just didn't have the space. Its central kitchen is flanked by a comfy living area, dramatic dining room, handy bar and a long, leisurely outdoor patio.

Upstairs, the configuration offers so much flexibility for family living. Note the large suite that's like a private guesthouse, the dual bedrooms with generous shared bath, and a giant bonus room to use as you please.

After touring this delightful home, you'll never settle for "builder beige" again. Put some color in your life, with this one-of-a-kind offering from Vintage Contemporaries.

*Vintage Contemporaries I, Ltd. 3027 Monticelo Ave. Dallas, TX 75205 214-824-2579 (phone) 206-202-3023 (fax)*

Square footages are provided for informational purposes and are merely estimates, therefore Vintage Contemporaries does not guarantee the accuracy of the information provided. Pricing, features, floorplans and specifications are subject to change without notice at anytime at the discretion of Vintage Contemporaries

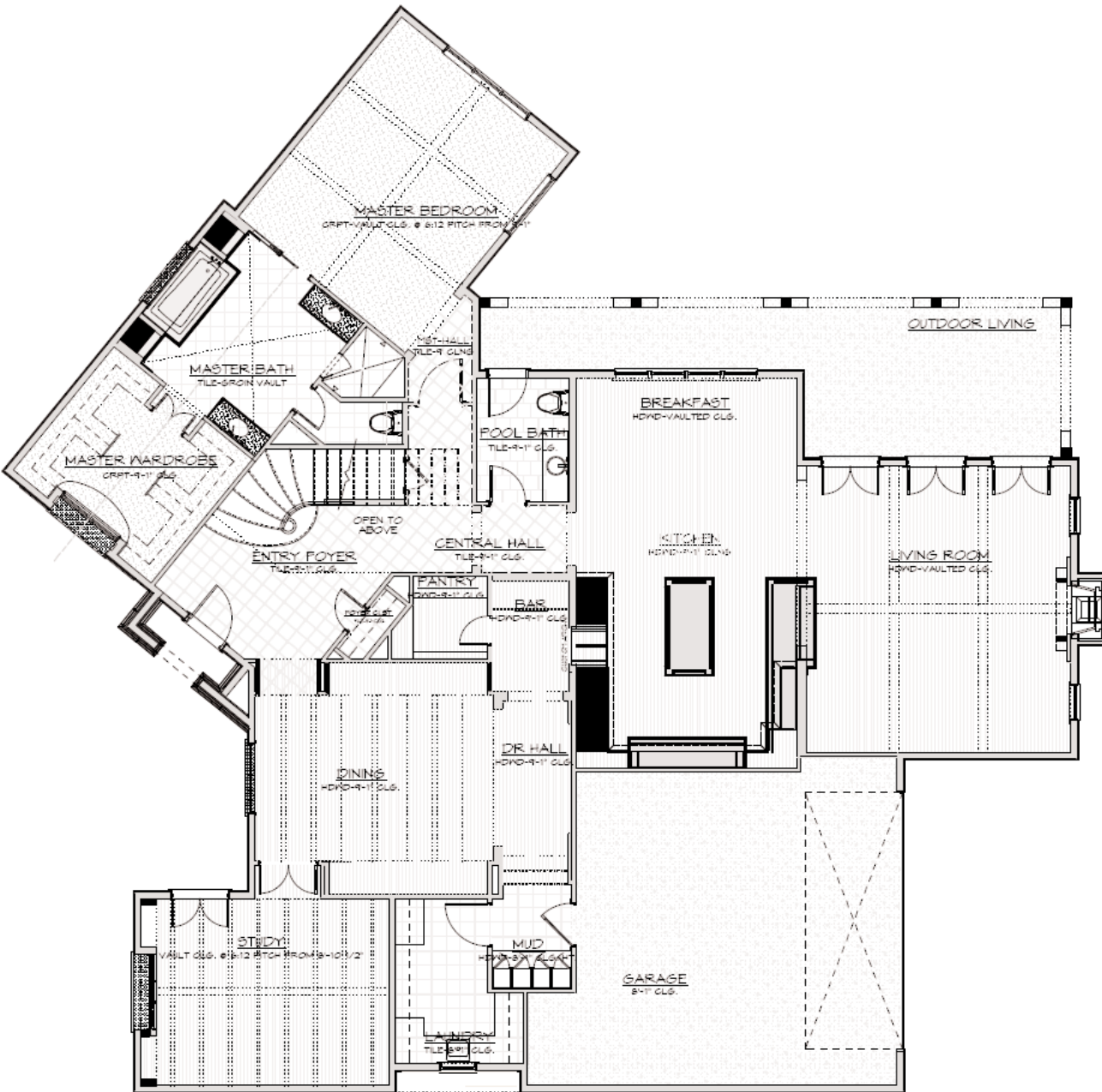
*Vintage Contemporaries*



# 3605 VINTAGE PLACE \*\*\*SOLD\*\*\*

4 BEDROOMS / 4.5 BATHS / FAMILY ROOM / DINING ROOM / STUDY / KITCHEN  
BREAKFAST NOOK / UTILITY / BONUS-MEDIA ROOM / PLAY LOFT

APPROX. 4569 SQ. FT. (5499 SF WITH PORCHES & GARAGE)



*First floor*

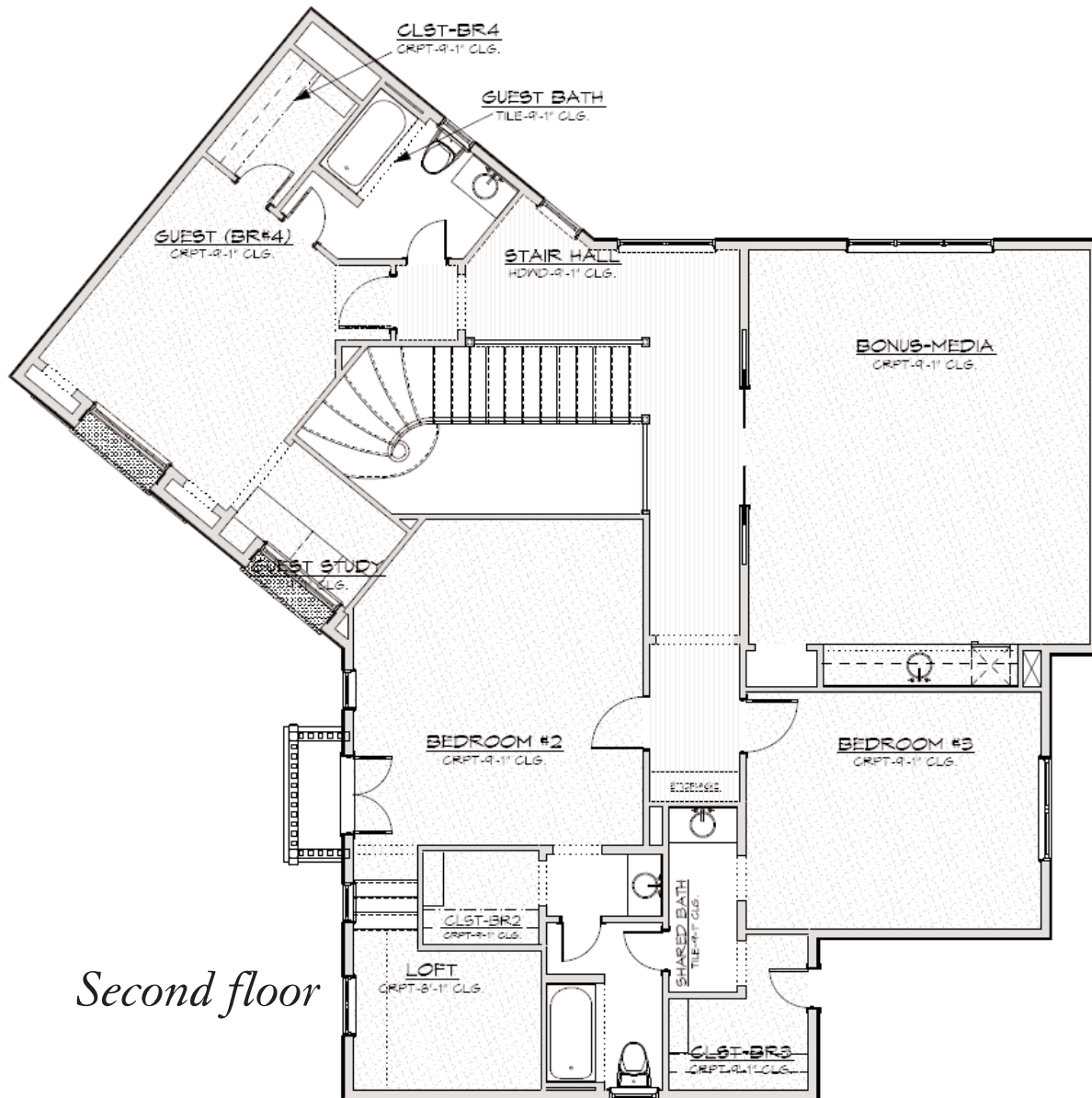
*Vintage Contemporaries*



# 3605 VINTAGE PLACE \*\*\*SOLD\*\*\*

4 BEDROOMS / 4.5 BATHS / FAMILY ROOM / DINING ROOM / STUDY / KITCHEN  
BREAKFAST NOOK / UTILITY / BONUS-MEDIA ROOM / PLAY LOFT

APPROX. 4569 SQ. FT. (5499 SF WITH PORCHES & GARAGE)



*Second floor*

*Vintage Contemporaries*



# DETAILS. DETAILS. DETAILS.

In many ways, it's easy to see what makes Vintage Contemporary homes so special: Exceptional, one-of-a-kind exteriors; authentic materials; faithful re-creation of period styles; abundant space, without sacrificing grace. Yet other benefits are less obvious. They come from hundreds of behind-the-scenes details we provide to make your home look, work, live, and feel like no other.

THE FOLLOWING ARE SOME OF THE AMENITIES IN THIS HOME:

## KITCHEN & BATH

Thermador 36" Pro-Series Stainless Cooktop  
Thermador Refrigerator  
Thermador Dishwasher  
Kohler® & Price Pfister® Plumbing Fixtures  
Granite, Marble, Wood & Tile countertops  
Custom, furniture-style cabinetry  
Custom stain/glaze colors for cabinets

## ELECTRICAL & PLUMBING

Computer network wiring through-out  
Surround sound pre-wiring in Bonus & Family Room  
Security system pre-wiring  
Stereo & volume control pre-wiring  
Both gas & electric supplies for dryer  
Automatically controlled exterior lighting

## LIGHTING

Antique & Reproduction lighting  
Insulated recessed lighting throughout  
Accent lighting throughout  
Hunter® fans

## HIGH-QUALITY EXTERIOR MATERIALS

Jeldwin-Pozzi® wood windows  
3/4" Lathe & Bathe Stucco  
Wood Beams & Cast stone on exterior facade  
Multi-colored Tile Roof  
Hand-crafted Front Door

## ENERGY-STAR HOMES

Cocoon® insulation  
Energy Star construction \*\*  
Radiant-barrier "cool ply" roof decking  
Wood Windows with Low-E & Insulated Glass  
\*\* 30-50% utility bill savings over "typical" construction \*\*



## BEAUTIFUL, DURABLE INTERIORS

Saltillo Entry Tile  
Mosaic' Tile Bathrooms  
Hardwood floors  
Primed undercoat sheetrock hand troweled texture  
All-wood stair Stair Treads  
Solid Core custom styled interior doors  
Custom Crafted entry doors  
Handmade Custom Staircase & Newel Posts  
Isokern® Wood Burning Fireplace  
Hand Made Tile Hearth & Built-in  
Hewn Beam Mantle

## LANDSCAPE DESIGN

Zoned Sprinkler system  
Cedar fencing  
Multiple trees in front & backyard  
Professional Designed landscaping

## AND ON ALL HOMES

Engineered and inspected post-tension foundations  
with piers to bedrock

*Few, if any, builders offer such a comprehensive, well-coordinated package of amenities. You'll be rewarded with a home that requires only personal furnishings to make it complete. By contrast, outfitting an ordinary spec-type house to this level of quality would easily add tens of thousands to its cost... rapidly eroding what might seem to be a "good deal."*

*It's still true: You get what you pay for. And at Vintage Contemporaries, that means timeless designs, unparalleled quality, and details...details...details.*

*To find out more about this home or the other homes of Vintage Place, schedule a private tour of our model home or discuss how we can build the new, "old home" of your dreams give us a call at 214-824-2579.*

*Additional information, photos, floorplans and virtual tours are available on our website at:*

**WWW.VINTAGECONTEMPORARIES.COM**